





Decorative blue wavy line border at the top of the page.



Decorative blue wavy line border at the bottom of the red block.



















VIDEO PEPLOFOROS

VIDEO CHESS

VIDEO WORKSHOP









Εργασίες Συντήρησης σε Εξέλιξη

Το Μουσείο της Αθήνας και ο Ινστιτούτο του 2013 για την προστασία των αρχαιοτήτων και των μνημείων της Αρχαίας Αθήνας, τα οποία διατηρούνται στο Εθνικό Αρχαιολογικό Μουσείο, έχουν ξεκινήσει τις εργασίες συντήρησης για να καθαριστούν και να αποκατασταθούν οι αρχαίες κολώνες.

Το Μουσείο της Αθήνας εργάζεται σε συνεργασία με το Εθνικό Ινστιτούτο για την προστασία των αρχαιοτήτων και των μνημείων της Αρχαίας Αθήνας, τα οποία διατηρούνται στο Εθνικό Αρχαιολογικό Μουσείο, έχουν ξεκινήσει τις εργασίες συντήρησης για να καθαριστούν και να αποκατασταθούν οι αρχαίες κολώνες.

Η εργασία αυτή περιλαμβάνει την αποκατάσταση των αρχαίων κολώνων και την αποκατάσταση των αρχαίων κολώνων.

Conservation Works in Progress

In November 2013 the Ministry of Culture and Sports of the Hellenic Republic, through the National Institute for the Research and Conservation of Ancient Monuments and Sites, has initiated the conservation works for the Caryatid Porch of the Erechtheion on the Acropolis of Athens.

The Ministry of Culture and Sports of the Hellenic Republic, through the National Institute for the Research and Conservation of Ancient Monuments and Sites, has initiated the conservation works for the Caryatid Porch of the Erechtheion on the Acropolis of Athens.

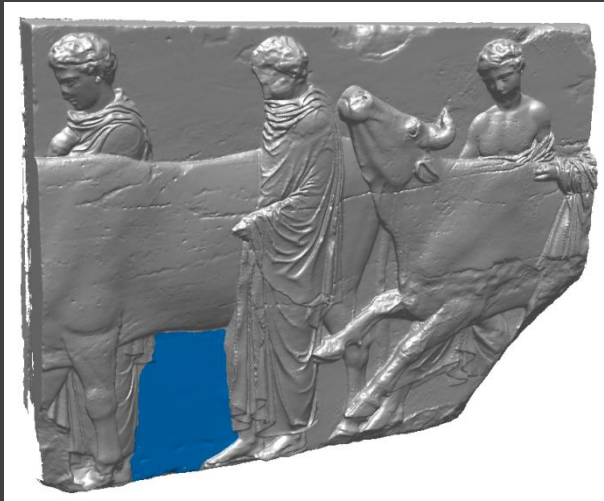
The conservation works include the cleaning and restoration of the Caryatid Porch of the Erechtheion on the Acropolis of Athens.



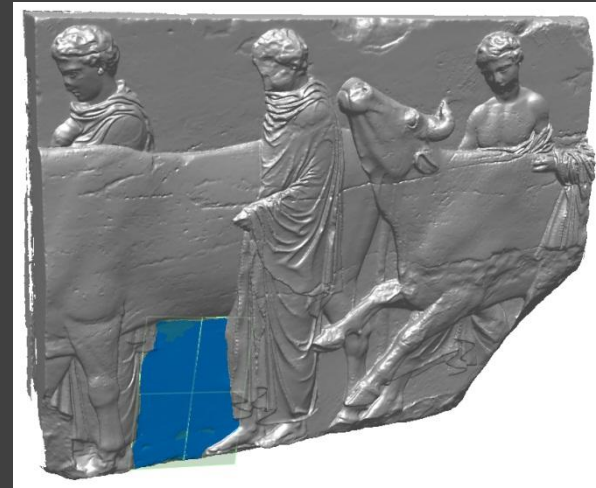
VIDEO EAST FRIEZE

VIDEO SOUTH FRIEZE

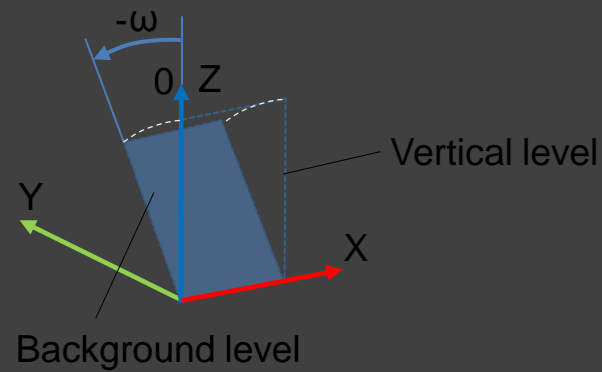
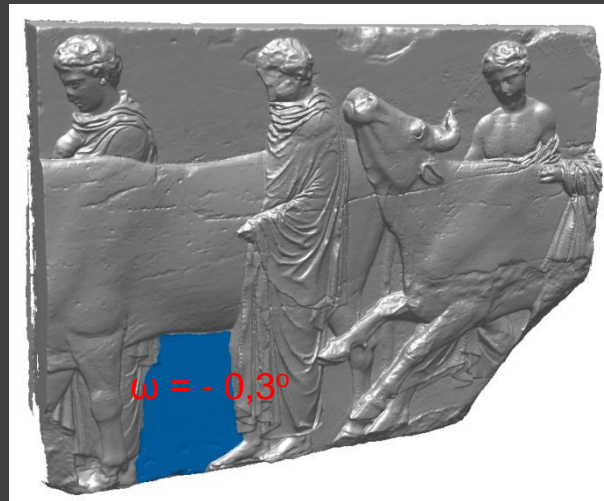
Background area selection



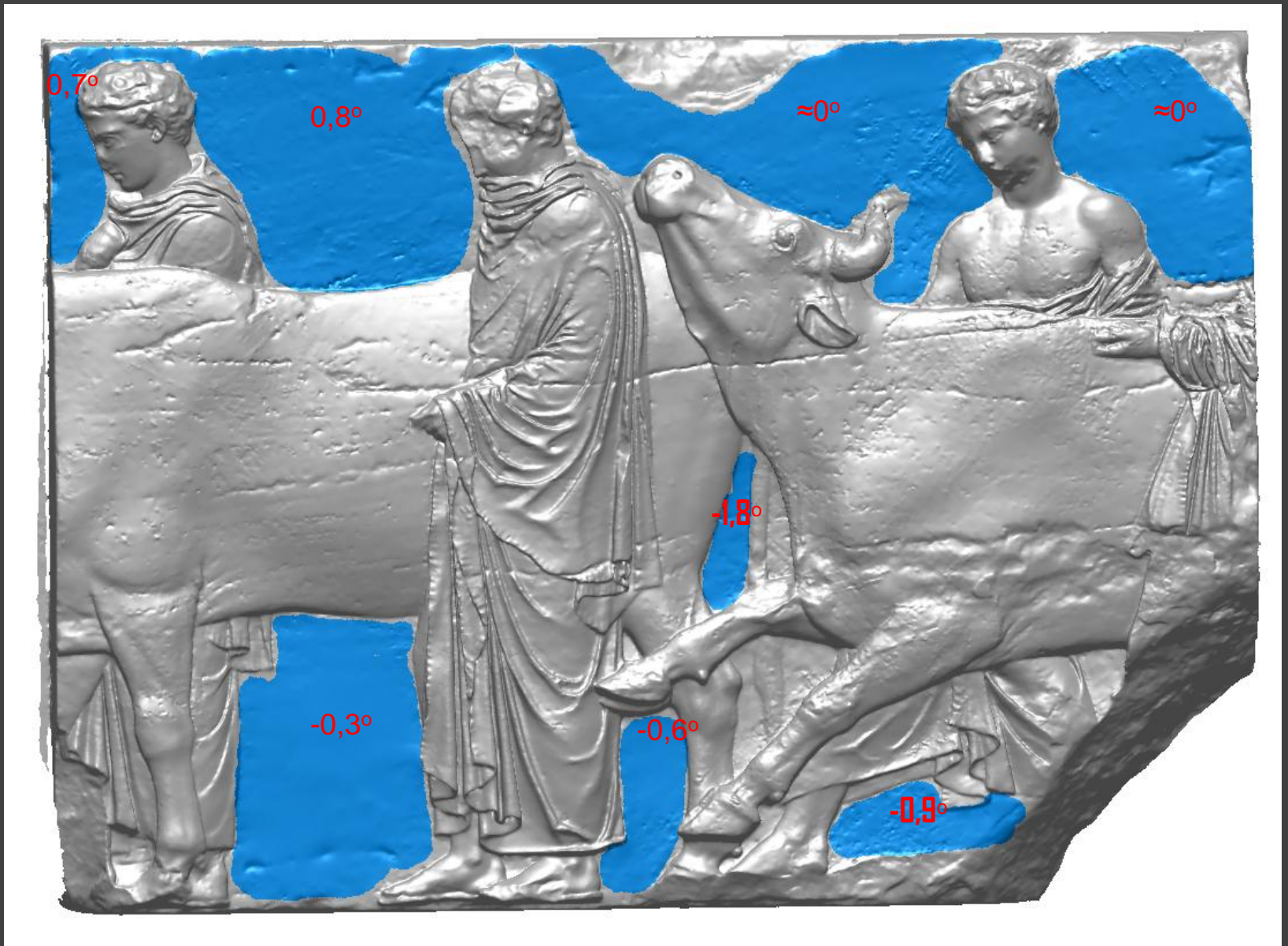
Background area description by a level



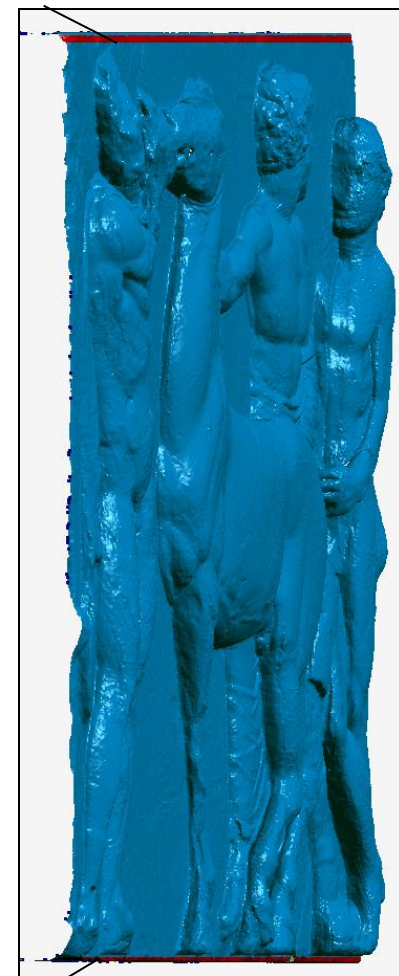
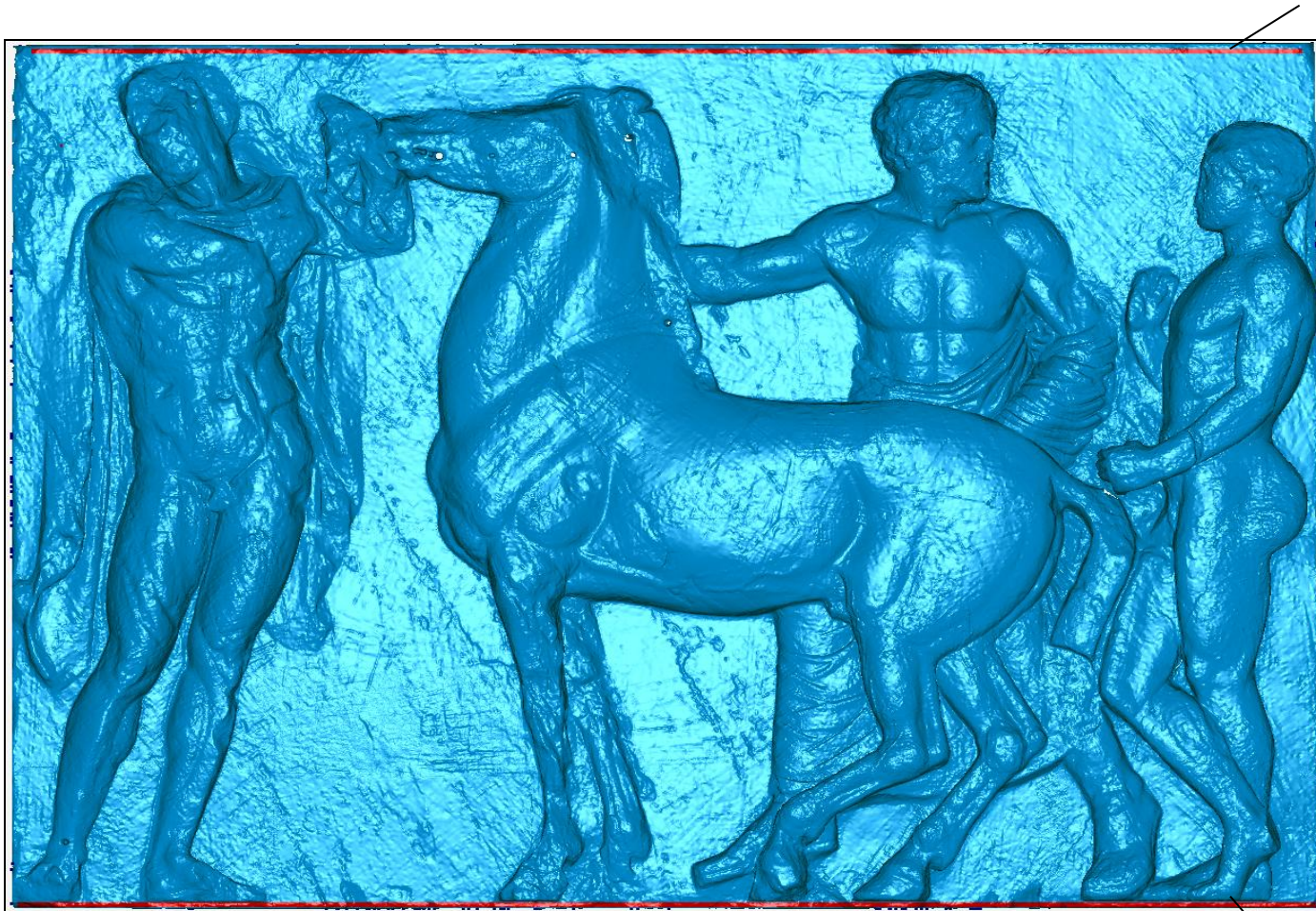
Background level inclination angle ω



Determination of inclination of an individual background level



Determined background levels inclination angles of frieze stone NF II

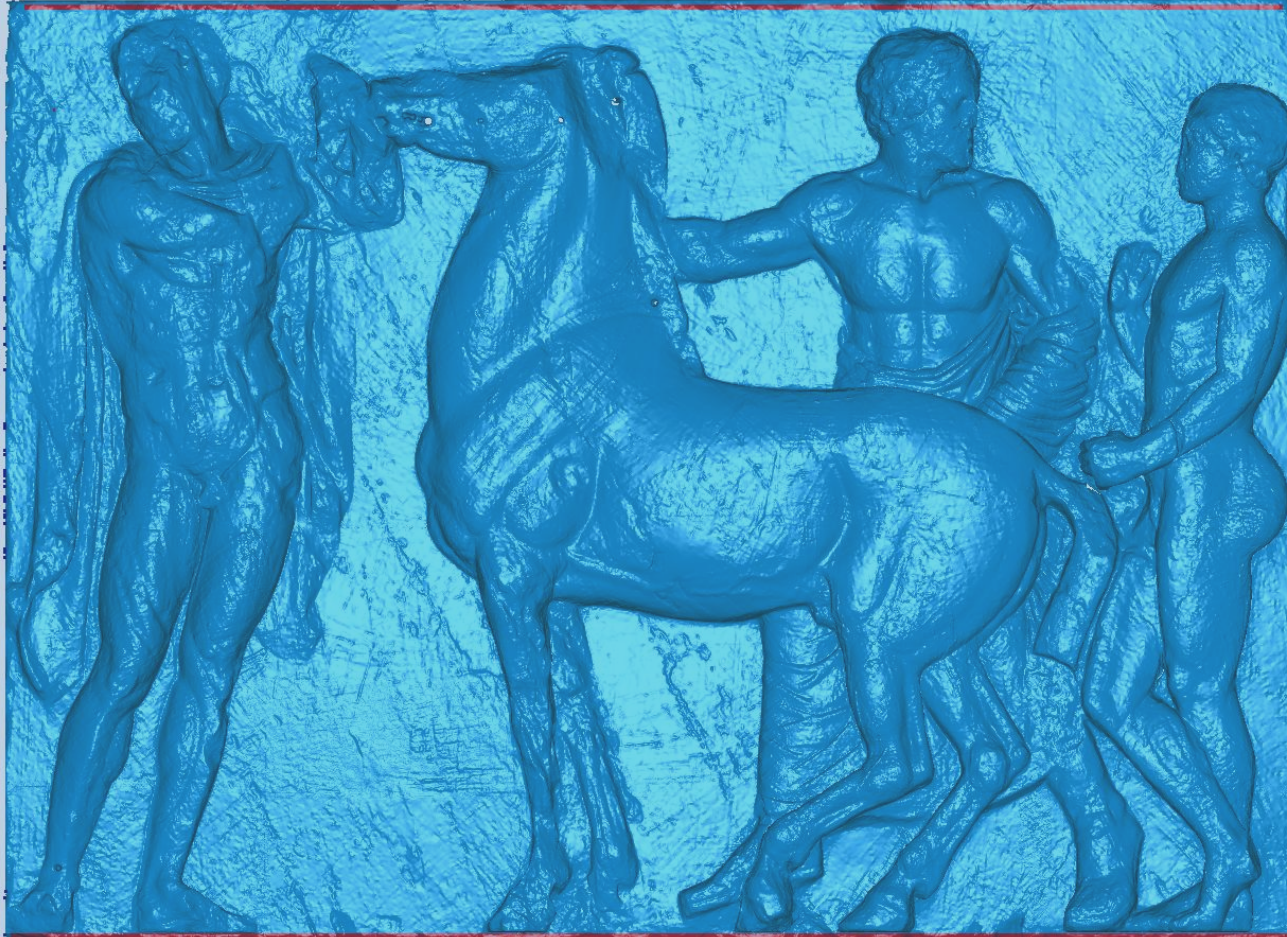


Introduction of regions (A), (B) of restricted width (B)

First step in determining a background reference level



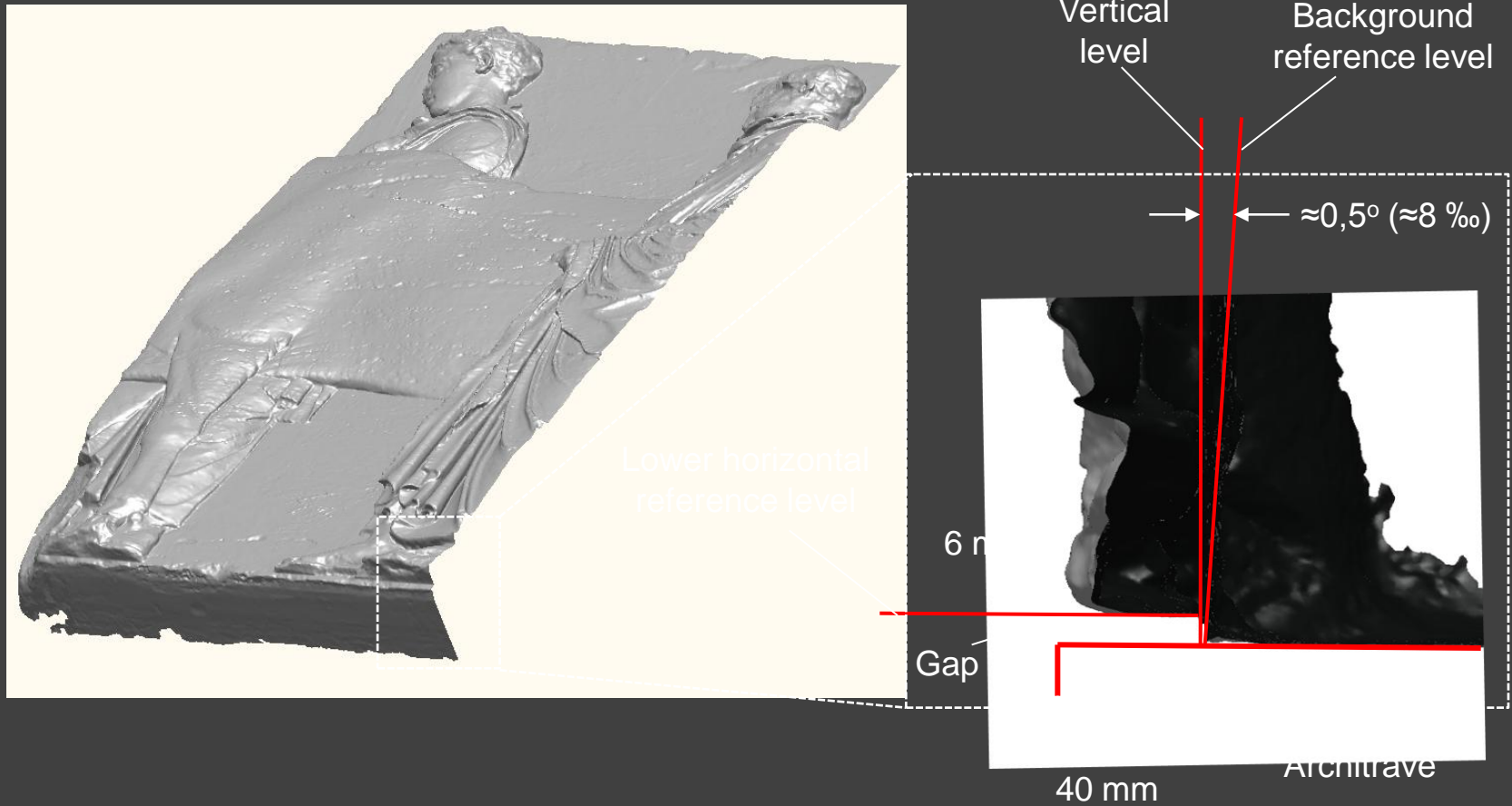
Background reference level



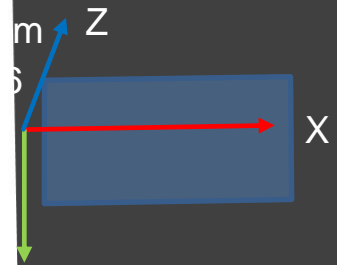
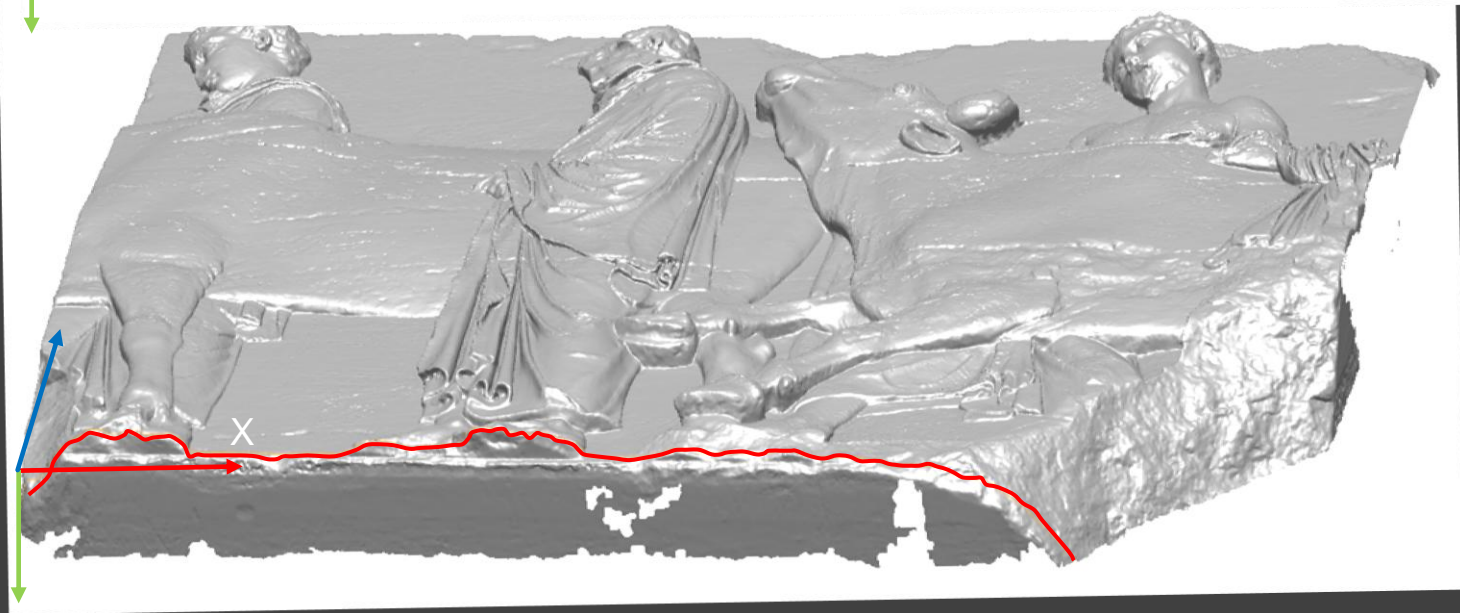
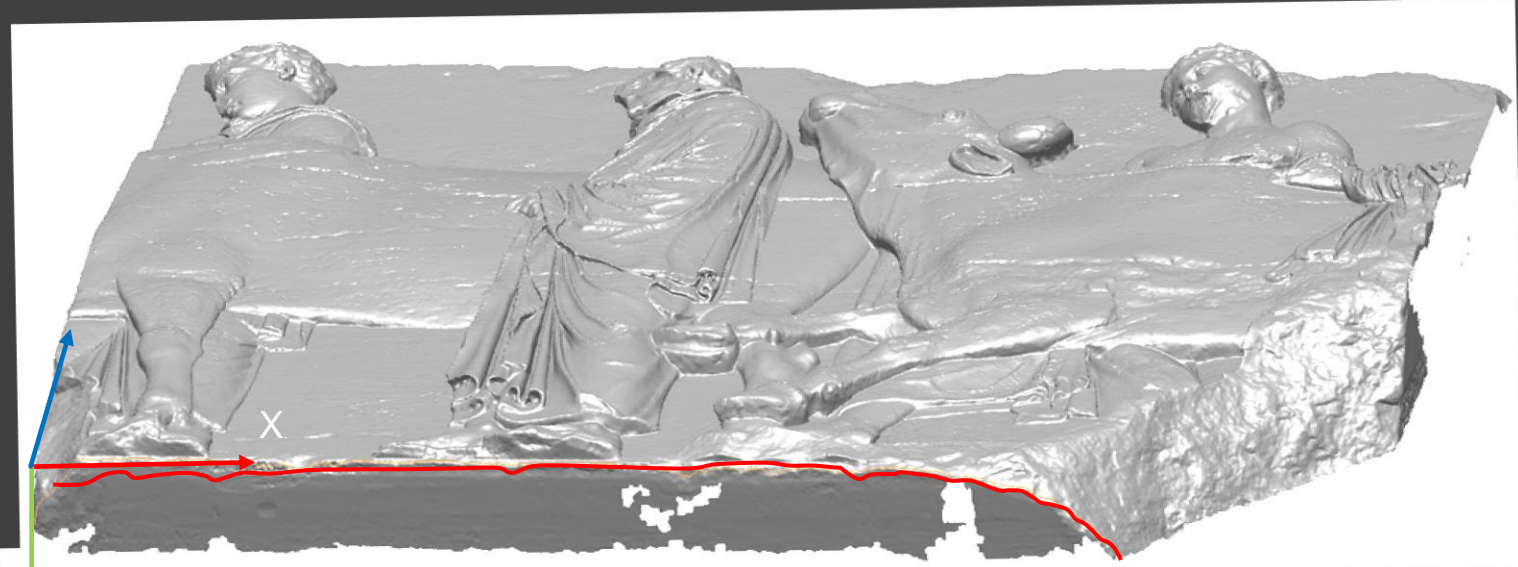
Inclination angle between reference and vertical plane $\sim 8 \text{ ‰}$

Determination of the background reference level

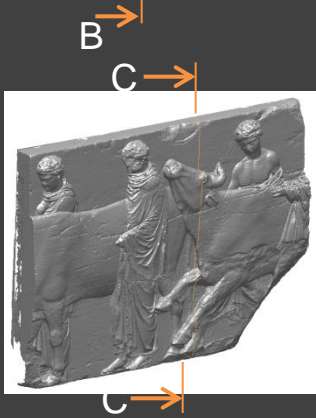
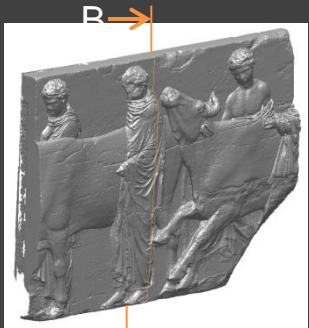
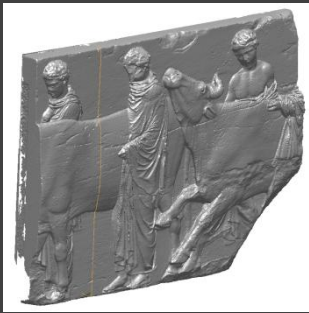
Cross section A-A of NF II



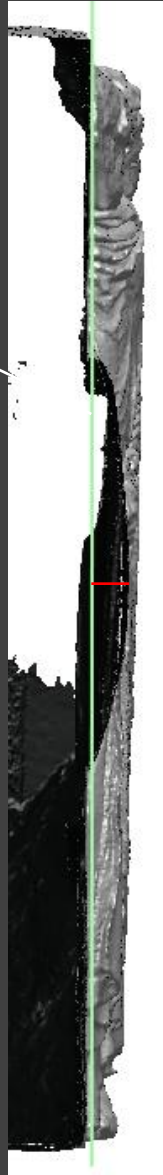
Gap between relief and architrave



Footprints of horses and people on the lower horizontal reference level



Reference level



42 mm



51 mm

48 mm

24 mm



50 mm

3 mm

Relieves positions relatively to background reference level





Contours on section levels at various depths
from the stone surface





VIDEO WEST FRIEZE











