



University of Cyprus  
**ARCHAEOLOGICAL RESEARCH UNIT**

**30 YEARS**  
OF ARCHAEOLOGICAL RESEARCH AND TEACHING



The **Archaeological Research Unit (ARU)** of the University of Cyprus, the first research unit of this academic institution, was founded in 1991 by decree of the Government of the Republic of Cyprus, following the issuing of the relevant legislation by the House of Representatives. Its primary aims are to conduct active research and to teach the ancient culture of Cyprus and neighbouring civilisations in the Mediterranean.

The senior members of the ARU, who are also part of the academic staff of the Department of History and Archaeology, have contributed immensely over the past 30 years to the achievement of the aforementioned objectives, i.e. the study and promotion of Cypriot cultural heritage through their research, their teaching and the practical training







they have been providing to students at undergraduate and postgraduate levels. The active study of other regions of the Mediterranean world has not been overlooked either, as members of the ARU academic staff have been carrying out excavations and research projects in Greece, Turkey and France.

The first archaeologist employed by the University of Cyprus was Vassos Karageorghis, Professor of Prehistoric Archaeology and former Director of the Department of Antiquities of the Republic of Cyprus, a scholar with an international profile, who undertook the initiative for the establishment of the Archaeological Research Unit and served as its first director.

During the tenure of Professor Demetrios Michaelides, who succeeded Professor Karageorghis as director of the Unit (1996-2014), followed by Professor Vasiliki Kassianidou (2015-2019), the ARU flourished and continued to function as an internationally renowned research centre.



## TEACHING AND RESEARCH STRANDS

After the retirement of **Demetrios Triantafyllopoulos** (Professor, Byzantine Art and Archaeology) in 2008, **Euphrosyne Rizopoulou-Egoumenidou** (Professor, Folk Art and Architecture) in 2013 and **Demetrios Michaelides** (Professor, Greek and Roman Archaeology) in 2014, the ARU academic staff continues to contribute to teaching and research along both mainstream and innovative strands of the discipline of Archaeology.





## PREHISTORIC and PROTOHISTORIC ARCHAEOLOGY:

Professor **Maria Iacovou** and  
Associate Professor **Ourania Kouka**

## CLASSICAL ARCHAEOLOGY:

Associate Professor **George Pappasavvas**

## BYZANTINE AND POST-BYZANTINE ART AND ARCHAEOLOGY:

Associate Professor **Maria Parani** and  
Associate Professor **Athanasios Vionis**

## HISTORY OF WESTERN ART:

Assistant Professor **Michalis Olympios**

## ARCHAOMETRY and ENVIRONMENTAL ARCHAEOLOGY:

Professor **Vasiliki Kassianidou**

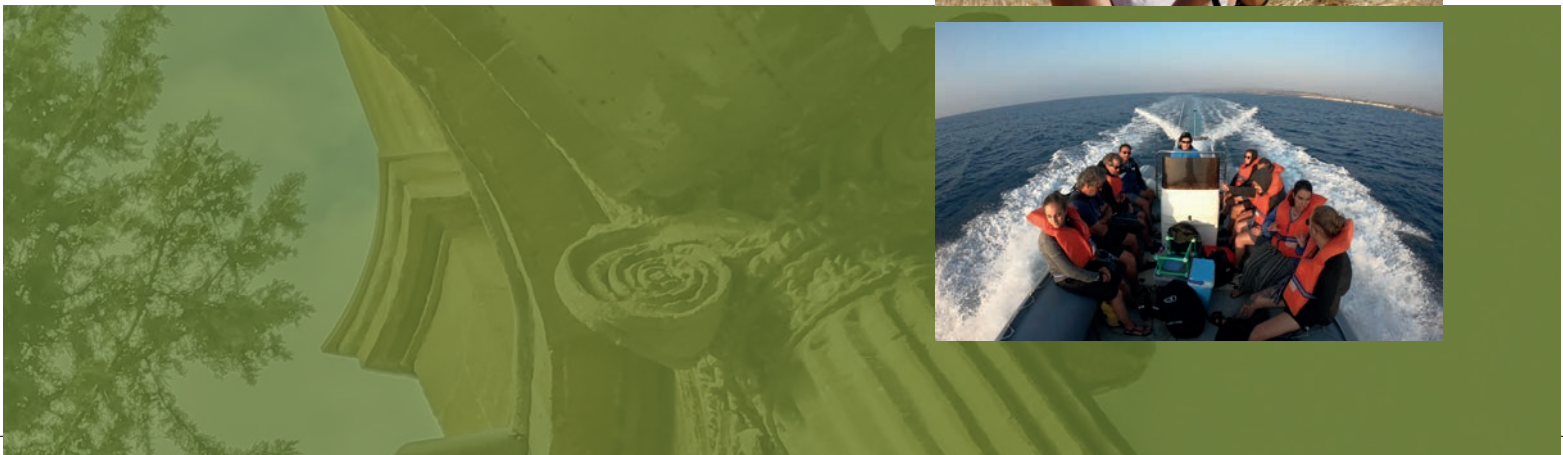
## UNDERWATER ARCHAEOLOGY:

Associate Professor **Stella Demesticha**

## DIGITAL HUMANITIES

(“Sylvia Ioannou Foundation” Chair):

Professor **Apostolos Sarris**





## THE ARU INFRASTRUCTURE

The Archaeological Research Unit's infrastructure is equally important and essential for archaeological research in Cyprus.

### LIBRARY

The Unit's Library comprises one of the largest and most up to date archaeological libraries on the island, home to more than 23,000 books and more than 9,000 archaeological journal volumes.

### REFERENCE COLLECTIONS

The ARU houses highly important reference collections, which include pottery, ceramic thin sections, rocks and minerals, seeds, charcoal and animal bones.



### LABORATORIES

The ARU possesses a set of advanced technical equipment not only for the recording of monuments and artefacts that come to light in the course of systematic excavations and archaeological surface surveys, but also for the laboratory analyses of finds, including the physico-chemical analyses of metal and ceramic artefacts etc.



## LASPAP

(Lab coordinator: O. Kouka)

The Laboratory for Archiving, Study and Publication of Excavation Projects, through the online system AIAS Professional (by ARCHAEOLOGIC) and the use of Autodesk Map 3D, aims at the digital archiving, study and publication of an unlimited number of excavated finds (interface in Greek and English). The Laboratory includes a central server, five work-stations, a high resolution scanner and a printer. AIAS software facilitates the connection of excavation architectural plans (e.g. the excavation of the ARU at Heraion on Samos) on a grid system with the database of pottery and small finds (coordinates, descriptions, drawings, photographs), enabling the stratigraphic classification and visualisation of percentages of finds in graphs through the use of multiple research mechanisms. LASPAP was set up in 2009 through O. Kouka's Start-Up Grant from the University of Cyprus.

## ArtLands Lab

(Lab coordinator: A. Vionis)

The Artefact and Landscape Studies Laboratory at the University of Cyprus was established in 2010 as an operating platform of the ARU. Its aims are (a) the precise documentation, processing, study and interpretation of Landscape Archaeology through a complete and advanced set of technical equipment (e.g. UAV, Robotic Total Station, Differential GPS, handheld computers with GPS receiver, Small Finds







Profilograph), and (b) the documentation, study and publication of archaeological finds by a team of specialised researchers. Part of ArtLandS Lab's equipment has already

been employed in several collaborative archaeological field projects of the University of Cyprus, of the Cyprus Department of Antiquities, and of foreign archaeological missions in Greece and Cyprus. It also comprises the main technical research tool in the framework of the Settled and Sacred Landscapes of Cyprus field project (SeSaLaC), as well as of other national and European-funded research projects on the island. Members of ArtLandS Lab's team (the coordinator, senior researchers, post-doctoral researchers, special scientists and PhD candidates) execute the archaeological documentation, digitisation and interpretation of Landscape Archaeology and archaeological finds in the field and/or in the lab.

### **MARELab**

(Lab coordinator: S. Demesticha)

The Maritime Archaeological Research Laboratory of the University of Cyprus was founded in 2011, aiming to serve as a dynamic venue of educational activities and interdisciplinary research. MARELab is the only institution in Cyprus able to conduct underwater archaeological investigations, while it also conducts research programmes with diverse subjects related to maritime cultural heritage. MARELab has its own infrastructure for the storage and processing of the data col-



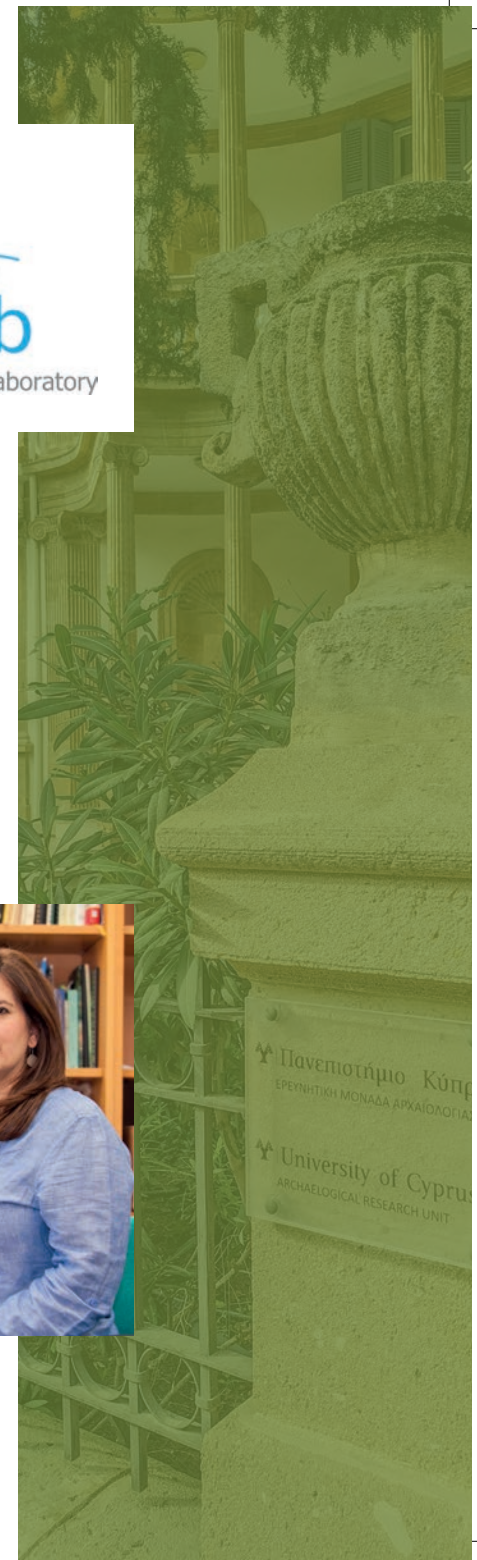
lected during field projects. It also has all the basic equipment necessary for underwater research, as well as a collection of historic wooden Cypriot boats and fishing equipment. In all MARELab projects, on land and underwater, particular emphasis is given to the implementation of digital methods for data recording and mapping. A specialised team of associates works exclusively on the digitisation of archaeological data, the upgrading of the existing software and their optimisation in order to meet the needs of archaeological documentation and interpretation. 3D applications have been extensively used both as an integral part of fieldwork documentation and as tools for archaeological interpretation.

### Laboratory for the Study of Ancient Materials

(Lab coordinator: V. Kassianidou)

The Laboratory for the Study of Ancient Materials of the ARU specialises in the interdisciplinary study of prehistoric and historic ceramics and glasses, the study of ancient metallurgy and metalwork, and the interdisciplinary study of other important inorganic materials such as rocks, plasters and pigments.

The laboratory is equipped with thin and polished section preparation



equipment (Buehler), a Portable Handheld XRF (Innov-X Delta Energy-Dispersive XRF), a Leica polarising/metallographic microscope (Leica DM2500P) and two stereomicroscopes. Members of the Laboratory demonstrate a solid track record for diverse interdisciplinary research in the study of ancient materials with numerous publications in international peer-reviewed journals, monographs and conference proceedings. The members of the Laboratory also have successfully attracted European and state funding for research projects (including three Marie Skłodowska-Curie Action projects) related to the study of ancient materials.

### **DigHumanities GeoInfo Lab**

(Lab coordinator: A. Sarris)



The Lab of Digital Humanities Geoinformatics is supported by the Chair “Sylvia Ioannou” for Digital Humanities at the Department of History and Archaeology of the University of Cyprus. The Lab is dealing with the application of cutting-edge technological aspects of Landscape Archaeology, Environmental Archaeology, Digital History, Monument Monitoring and Cultural Heritage Risk Assessment. The Lab is involved in projects within the domains of Geographic Information Systems (GIS), Geoinformatics (Geophysical Prospection, Satellite Remote Sensing, Aerial Photography and Photogrammetry), computational and statistical methods, 3D reconstructions, machine learn-



ing and AI, etc. The research of the Lab operates on an international level with an emphasis on Cyprus, the Eastern Mediterranean and the Balkans. As well as providing a hands-on experience and expertise for students and professionals, the Lab is conducting high-level research and provision of services, which are supported by a number of high-tech instrumentation and computer facilities.

## SCIENTIFIC CONFERENCES AND PUBLIC LECTURES

Over the years, the Archaeological Research Unit has been very active in organising international conferences and workshops. From its foundation in 1991 up until 2019, the ARU has organised 60 international conferences, while members of the academic staff have already published the proceedings of 20 scientific meetings held at the ARU.

Members of the Unit have been working continuously towards the dissemination of their ongoing scientific work to the wider public. The ARU has also been busy organising an established Series of Public Lectures (held every Monday evening at the ARU building) every teaching semester, in which Cypriot and overseas archaeologists present the results of their past and ongoing research.



## NATIONAL AND EUROPEAN RESEARCH PROJECTS

The ARU has been particularly successful in securing external-EU funding for its several research projects. Members of the ARU have so far won four EU Marie Curie projects (the most important amongst them being the Marie Curie Initial Training Network 'New Archaeological Research Network for Integrating Approaches to Ancient Material Studies' – NARNIA, coordinated by Prof. V. Kassianidou), eight programmes by the Cyprus Research and Innovation Foundation (amongst which are two EXCELLENCE HUBS and two POSTDOC projects), five research projects funded by the A.G. Leventis Foundation, and eighteen programmes funded by the University of Cyprus and other bodies. This is a very important part of ARU's activities in that it provides a stimulating environment to a number of highly promising junior and senior researchers who are actively engaged in original and cutting-edge research. Some of the major research projects coordinated by ARU are listed below:



projects funded by the A.G. Leventis Foundation, and eighteen programmes funded by the University of Cyprus and other bodies. This is a very important part of ARU's activities in that it provides a stimulating environment to a number of highly promising junior and senior researchers who are actively engaged in original and cutting-edge research. Some of the major research projects coordinated by ARU are listed below:



## MARIE SKŁODOWSKA-CURIE PROJECTS

### GLAZE, 2017-2019

(Coordinator: V. Kassianidou)

The Use of Glazing Traditions to Examine the Dynamics of Interaction between Cultures in Contact: A Case Study of Cypriot Glazed Wares from the 11th to the 17th Centuries AD (Individual Fellowship, Call H2020-MSCA-IF-2016). Postdoctoral researcher: Carmen Ting.

### PRENET, 2015-2017

(Coordinator: V. Kassianidou)

Social Networking and Raw Material Selectivity in Early Prehistoric Mediterranean Seascapes (Individual Fellowship, Call H2020-MSCA-IF-2014). Postdoctoral researcher: Theodora Moutsiou.

### ARIEL, 2013-2017

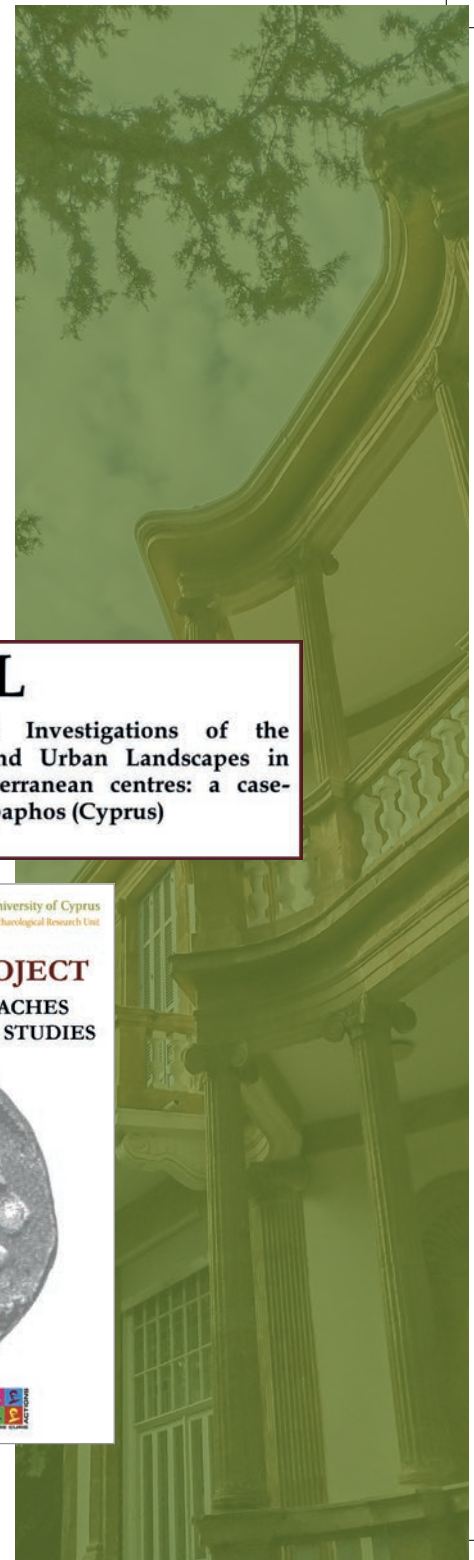
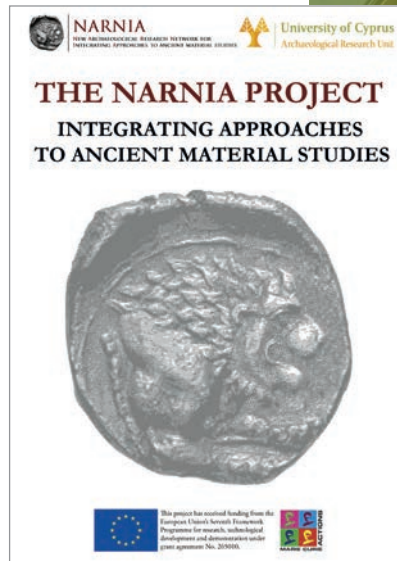
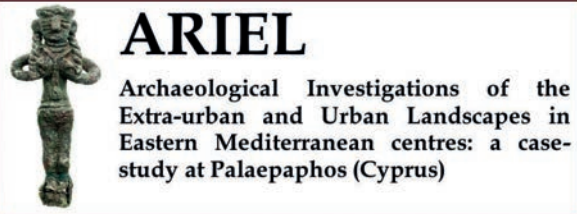
(Coordinator: M. Iacovou)

Archaeological Investigations of the Extra-Urban and Urban Landscape in Eastern Mediterranean Centres: A Case-Study at Palaepaphos, Cyprus (Call FP7/PEOPLE/2007-2013). Postdoctoral researcher: Artemis Georgiou.

### NARNIA, 2010-2014

(Coordinator: V. Kassianidou)

New Archaeological Research Network for Integrating Approaches to Ancient Material Studies (Initial Training Network Programs, Call FP7-PEOPLE-2010). Having secured 4.6 million euros, NARNIA comprises one of the biggest and most successful European projects that Cyprus (and not just Cyprus) has ever won in the field of Humanities.



## RESEARCH AND INNOVATION FOUNDATION PROJECTS

### UnSaLa CY, 2018-2021

(Coordinator: A. Vionis)

Unlocking the Sacred Landscapes of Cyprus (RE-START 2016-2020, EXCELLENCE HUBS/1216/0362).

Senior researcher: Giorgos Papantoniou.

### MuseCo, 2018-2021

(Coordinator: G. Papasavvas)

Revisiting Museum Collections (RESTART 2016-2020, EXCELLENCE HUBS/1216/0093). Postdoctoral researcher: Anna Georgiadou.

### SpaMaP, 2018-2021

(Coordinator: A. Vionis)

The Spatiality and Materiality of Pilgrimage in Byzantine and Medieval Cyprus and Religious Networks in the Eastern Mediterranean (RESTART 2016-2020, POSTDOC/0916/0251). Postdoctoral researcher: Ourania Perdiki.

### PLEICY, 2018-2020

(Coordinator: V. Kassianidou)

Water Routes in Human Island Dispersals: Modelling the Pleistocene Exploitation of Cyprus (RE-

START 2016-2020, POSTDOC/0916/0185). Postdoctoral researcher: Theodora Moutsiou.

### Sailing in Cyprus, 2012-2015

(Coordinator: S. Demesticha)

Sailing in Cyprus through the Ages. Researcher: Evi Karyda.

## A.G. LEVENTIS FOUNDATION PRO- GRAMMES

### SOTERA, 2014-2016

(Coordinator: M. Parani)

The Church of the Transfiguration at Sotera (Famagusta District) in Context: History – Architecture – Murals





## **KARAVOI, 2014-2016**

(Coordinator: S. Demesticha)

The Ship Graffiti on the Medieval and Post-Medieval Monuments of Cyprus: Mapping, Documentation and Digitisation.

## **Stirring Pots on Fire, 2011-2012**

(Coordinator: A. Vionis)

A Diachronic and Interdisciplinary Study of Cooking Pots from Cyprus. Researcher: M. Dikomitou-Eliadou.

## **MEC-HOT, 2011-2012**

(Coordinator: D. Michaelides)

Moulding Expressions of Culture: The Terracotta Figurines from the House of Orpheus, Nea Paphos. Researcher: Giorgos Papantoniou.



## **Heraion on Samos, 2009-2011**

(Coordinator: O. Kouka)

The Prehistoric Settlement at the Heraion of Samos (Sacred Road).

## **INTERNAL RESEARCH PROGRAMMES**

### **RURAL CY, 2019-2021**

(Coordinator: A. Vionis)

Rural Life in Cyprus: Digitising and Reconstructing Material Culture through Monastic Property Lists (18th-19th Centuries). Collaborator: Euphrosyne Rizopoulou-Egoumenidou. Special Scientist: Petroula Hadjittofi.

### **Enkomi, 2017-2018**

(Coordinator: G. Papasavvas)

Enkomi: A Site at the Forefront of Technological Innovation in Metallurgy and Artistic Excellence in Metalwork.

### **Palaipaphos, 2007-2010**

(Coordinator: M. Iacovou)

A Long-Term Response to the Need to Make Modern Development and the Preservation of the Archaeo-Cultural Record Mutually Compatible Operations: Pilot Application at Kouklia, Palaipaphos.



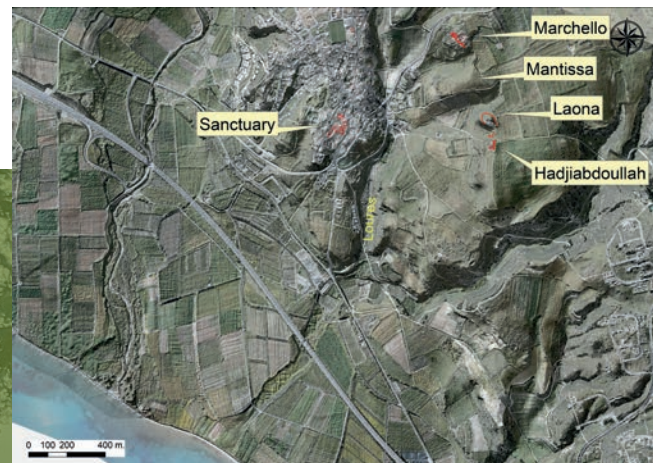
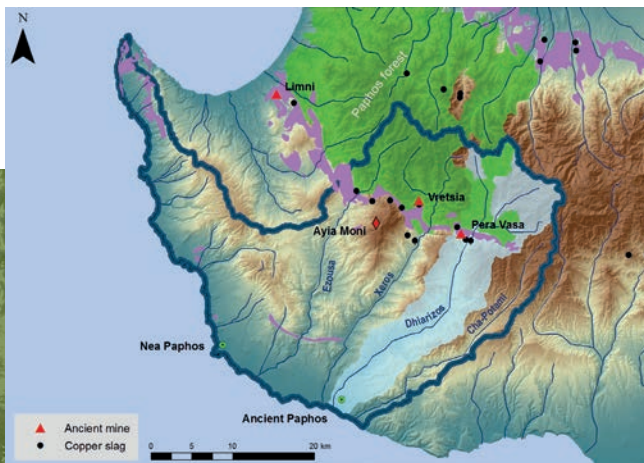
# ARCHAEOLOGICAL FIELD PROJECTS

## THE PALAEPAPHOS URBAN LANDSCAPE PROJECT (PULP)

(Coordinator: M. Iacovou)

Since its initiation in 2006, the Palaepaphos Urban Landscape Project (PULP) has been building a diachronic model of the urban structure of the polis of Ancient Paphos and a site distribution model of its resource periphery using geospatial analyses and advanced documentation and imaging technologies. Aided by annually conducted field campaigns, PULP has identified the basic structure of the urban landscape of ancient Paphos in the second and first millennia BC and has provided a political and economic context to the sanctuary of the Cypriot Goddess. Settlement analysis in the catchment of Paphos suggests a link between

copper procurement in the southern foothills of the Troodos Mountains and the foundation of Paphos circa 1700 BC as a gateway to the sea. Following the unexpected discovery of an until now unknown purpose-built complex that consists of individual units devoted to processing, production and storage (e.g. olive oil, wine and purple dye), PULP has identified the plateau of Hadjiabdoulla (east of the sanctuary) as the Cypro-Classical citadel. The archaeo-environmental method applied to the collection and analyses of materials from this extensive and well-preserved complex will facilitate the study of the political economy of the city-state of Paphos.





## THE MAZOTOS SHIPWRECK EXCAVATION

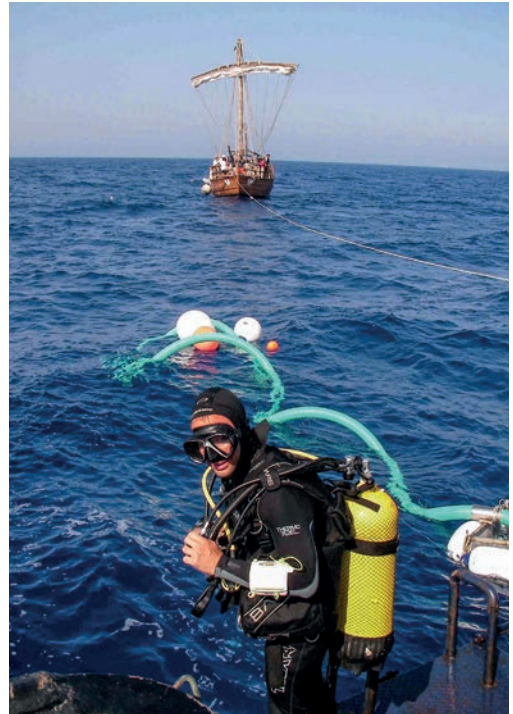
(Coordinator: S. Demesticha)

Research at the Mazotos Shipwreck began in 2007, under the direction of S. Demesticha, in collaboration with the Cyprus Department of Antiquities. This is the first underwater archaeological research conducted by Cypriot institutions, thus establishing the domain of maritime archaeology on the island. The ship that sank at Mazotos was a merchantman of the 4th century BC. It was located in the sea, off Mazotos village, at a depth of -45 metres. It carried a homogenous cargo of Aegean wine, packaged almost exclusively in amphorae from the island of Chios. As the excavation progresses, parts of the wooden hull have been revealed under the cargo.



revealed under the cargo. The scientific significance of the project

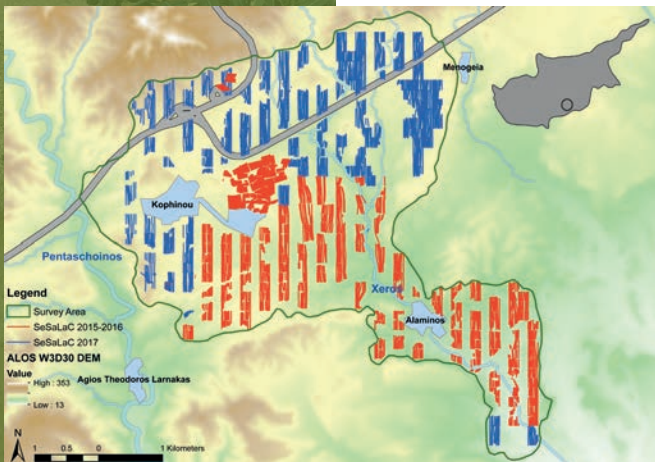
is noteworthy, because it sheds new light on diverse research questions: the finds will contribute significantly to the study of the sea routes and the mechanisms of trade between the Aegean and the Eastern Mediterranean, as well as the history of ship-building in antiquity.



## SETTLED AND SACRED LANDSCAPES OF CYPRUS

(Coordinator: A. Vionis)

Settled and Sacred Landscapes of Cyprus (SeSaLaC) comprises the first intensive archaeological survey project of the University of Cyprus on the island, directed by A. Vionis, G. Papantoniou (University of Cyprus) and D. Nicolaou (University of Mainz), in collaboration with the Cyprus Department of Antiquities. Systematic field exploration began in 2014 in the Xeros River valley (Larnaca District). The project comprises one of the new-generation highly intensive surface survey programmes, adopting a more systematic methodology in landscape archaeology, and developing a more intensive approach to surface coverage, collection and digitisation of archaeological data and finds. SeSaLaC also comprises an archaeological summer field-school for students of the University of Cyprus and aims to study rural landscapes and settlement evolution diachronically, to investigate the relationship between past societies and agricultural land, urban centres, ports, the road network and copper mines, as well as explore religious monuments within their politico-economic context and the symbolic landscape.





## POSTGRADUATE STUDY PROGRAMMES

### Postgraduate Programme in “Mediterranean Archaeology from Prehistory to the Byzantine Era”

The aim of the programme is the archaeological, historical and cultural study of the Mediterranean from Prehistory to the Byzantine era. Members of the academic staff of the Department of History and Archaeology, specialising in Prehistoric and Protohistoric Archaeology, Greek and Roman Archaeology, Ancient History, Byzantine Archaeology, Environmental Archaeology, Archaeometry and Digital Humanities, are included in the programme's curriculum and offer their guidance as academic supervisors.

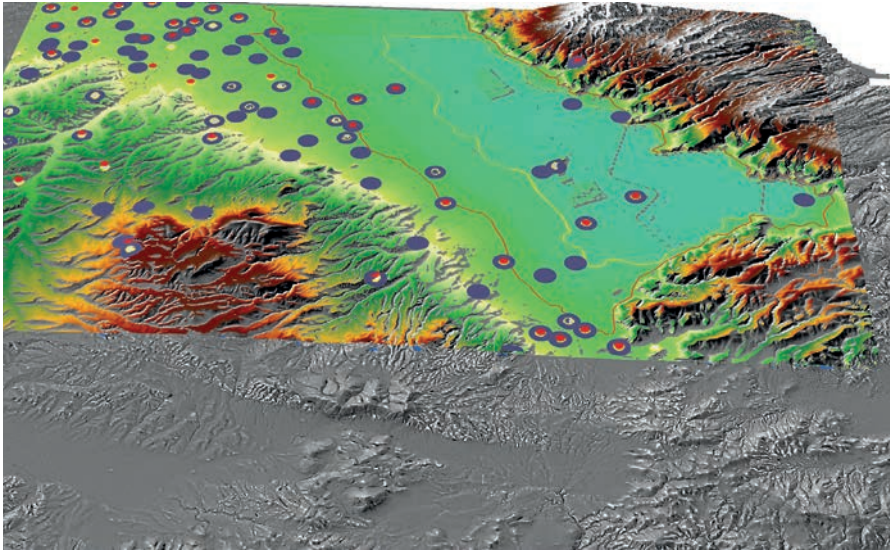


## Postgraduate Programme in “Field Archaeology on Land and Under the Sea”

The English-taught programme in Field Archaeology provides advanced knowledge and research training opportunities in a dynamic learning environment, combining theory with hands-on experience in the field and in the laboratory. The programme also provides an excellent environment for young archaeologists to deepen and extend their training, and to pursue their careers in diverse domains, such as academic research and public archaeology. Members of the academic staff of the Department of History and Archaeology, specialising in Underwater Archaeology, Pre-historic and Protohistoric Archaeology, Greek and Roman Archaeology, Byzantine Archaeology, History of Art, Environmental Archaeology, Archaeometry and Digital Humanities, offer a range of seminar-courses from the programme’s curriculum.







### Postgraduate Programme in “Digital Humanities”

The English-taught programme (MA/PhD) in Digital Humanities, supported by the Chair “Sylvia Ioannou” for Digital Humanities, deals with the application of cutting-edge technological aspects in Landscape Archaeology. Teaching and research offer hands-on experience and practical skills in the domains of Geographic Information Systems (GIS), Geoinformatics (Geophysical Prospection, Satellite Remote Sensing and Photogrammetry), computational and statistical methods, 3D reconstructions, etc. Students are exposed to the archaeology of Cyprus and the Eastern Mediterranean and have the opportunity to carry out their research according to their interests, participate in local and international fieldwork campaigns, gain a familiarity with various softwares and obtain a critical perspective on the application of digital technologies in the domain of Archaeology and History. The goal is to provide students with an advanced level of study and experience that will make them competitive in their future involvement in archaeological projects.



## Interdepartmental Postgraduate Programme in “Byzantine Studies and the Latin East”

The Department of History and Archaeology (ISA) and the Department of Byzantine and Modern Greek Studies (BNE) offer a joint specialised post-graduate programme in Byzantine and Medieval Studies leading to an MA

or a PhD. The programme promotes interdisciplinary approaches in the various fields of Byzantine and Medieval Studies. More specifically, the programme aims at a multilevel and multifaceted study of Byzantine and Late Medieval culture that combines the various theoretical and practical methodological tools of Philology, History, History of Art and Archaeology. In this way, the historical phenomena “Byzantium” and the “Latin East” are firmly placed

within the broader geographical framework of Medieval Europe and the Middle East. The programme is run by members of the two Departments in the following fields of specialisation: Byzantine Language and Literature, Byzantine History, Medieval History, Byzantine and Post-Byzantine Art and Archaeology, and Medieval Art.





## Interdepartmental Postgraduate Programme in the “Conservation and Restoration of Historical Buildings and Structures”

The Department of Civil and Environmental Engineering (Faculty of Engineering), the Department of Architecture (Faculty of Engineering) and the Department of History and Archaeology (Faculty of Letters) offer a joint specialised postgraduate programme in the conservation and restoration of historical buildings. The programme focusses on specialised postgraduate teaching and provides state-of-the-art practical skills, introducing students to a holistic and multi-layered understanding of the methods and approaches concerning the appropriate protection, conservation and restoration of monuments and other historical structures. Finally, it aims at developing other scientific areas, relevant to conservation and restoration.





## **ARCHAEOLOGICAL RESEARCH UNIT**

12 Gladstone Street, 1095 Nicosia, CYPRUS

Postal address:

P.O.Box 20537, 1678 Nicosia, CYPRUS

Tel.: +357 22 893560

Fax: +357 22 895057

Email: [archlgy@ucy.ac.cy](mailto:archlgy@ucy.ac.cy)

## **DEPARTMENT OF HISTORY AND ARCHAEOLOGY**

P.O.Box 20537, 1678 Nicosia, CYPRUS

<http://www.ucy.ac.cy/hisarch/en/>

Tel.: +357 22 892180

Fax: +357 22 892181

Email: [isa@ucy.ac.cy](mailto:isa@ucy.ac.cy)

<http://www.ucy.ac.cy/aru/en/>